



GOLD BULLION
DEVELOPMENT CORP

2nd Public Meeting

The Granada Project

May 21 2014

WWW.GOLDBULLIONDEVELOPMENTCORP.COM

TSX-V: **GBB**

OTC PK: **GBBFF**

FRANKFURT: **B6D**

PRESENTATION PLAN

- 👑 Progress of the Granada project
- 👑 Community relations
- 👑 Economic benefits of the project
- 👑 Current and future work
- 👑 Possible impacts related to the water
- 👑 Questions and comments

OUR PROMISE

Gold Bullion **voluntarily** engages in approaching the community to **hear concerns**, and **adapts**, where possible, its practices in order to **minimize the social and environmental impacts** of its activities.

OBJECTIVES OF THE MEETING

- 👑 Find out **about the company**
- 👑 **Learning** about the Granada project
- 👑 Know your **concerns** and **interests**
- 👑 **Determine your interest** to follow and participate in the information process
- 👑 Answer your **questions**

COMMUNITY RELATIONS

Community Consultations

- 👑 Meetings with elected officials
 - Technical meeting with municipal officials
 - Meetings with MPs and MLAs
- 👑 Recreational users: meeting with the snowmobile club
- 👑 Local: Public meeting (possible impacts, traffic, water, noise)
- 👑 General: Update website under 'Community'
- 👑 Discussions with CSRN busing schedules and Recreation Department (day camp)

COMMUNITY RELATIONS

Understanding of the Community

- 👑 Phase 1 : sampling wells sector
- 👑 Noise study and implementation of mitigation measures
- 👑 Compile data and answer questions from the community

INFORMATION PROCEDURES WITH ABORIGINAL COMMUNITIES

Consultations with the First Nations

Approach :

- We believe in transparent bidirectional relationships with all groups that share the territory, including First Nations.

Information process underway with:

- First Nations communities.

UPDATE ON PERMITS AND STUDIES

Completed:

- 👑 Baseline study
- 👑 Environmental testing on the rocks and minerals and **sterile** releases on treatment.
- 👑 Sampling program in the **vicinity of water** (phase 1)
- 👑 Agreement for milling with Iamgold
- 👑 Hydrogeological study

Ongoing:

- 👑 Prefeasibility study (public report by June 30)
- 👑 Noise analysis initiated
- 👑 Path for the transport of ore identified
- 👑 Preparation of the application for a certificate of authorization

RESERVES

The proposed project for the Granada **Gold Bullion** property consists of 4 small pits totaling **589, 000 tonnes of ore at an average grade of 4.24 g / t.** Underground production will then be started.

ECONOMIC DATA

👑 Recovery of capital within one year

👑 Potential duration Ph1+Ph2 > 10 years

- Life of the open pit mine 3 years. PFS
- With underground resources measured, and indicated mineral resources, 7 or 8 additional years of mine life could be added.

CA \$ 1400/oz

JOB CREATION

Directly employed at the mine

Chief engineer	1
Surveyor	1
Mapping technician	1
Chief geologist	1
Assistant geologist	1
Technician	1
Mine manager	1
Administrative assistant	1
Accountant clerk	1
Environmental technician	1
Warehouse responsible	1
Warehouse employee	1
Driver	1
Total	13

Mining Contractor

Labour 40-50

Transport Contractor

10-12

Other

0

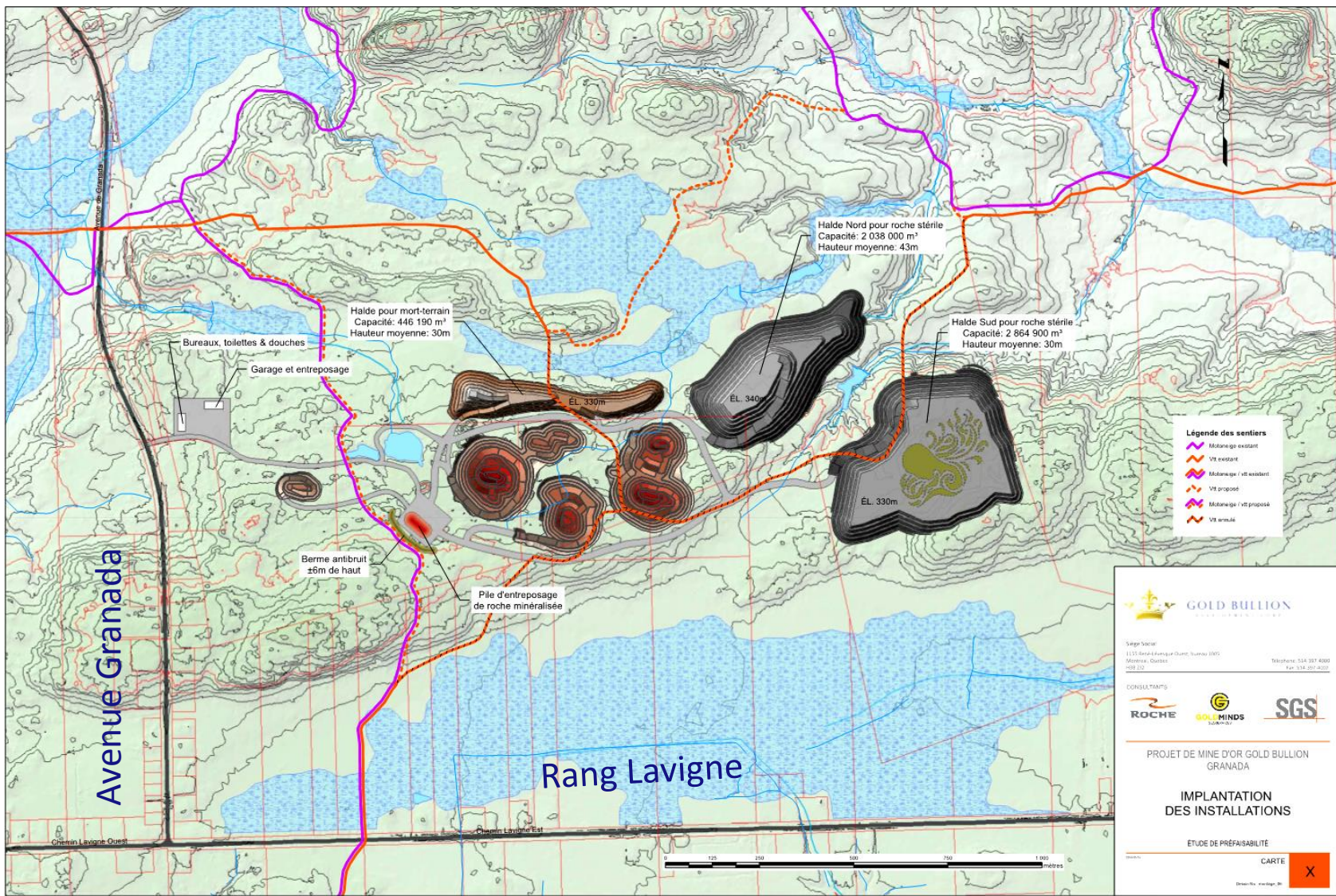
Total 50-62

**Total creation
of employment**

63-75

ECONOMIC POTENTIAL OF PROJECT

- 👑 Initial investment of 6.7 millions
 - Total investment of more than 200 million
- 👑 Creation of 30 direct jobs (pit)
 - 150 jobs in the underground
- 👑 Creation of secondary transportation jobs
- 👑 Economic impact of goods and services
- 👑 Consolidation of the activities of Iamgold
- 👑 Payroll: 75 jobs x average salary 80 000 = 5.6 million
(rolling start)



- Légende des sentiers**
- Mixtange existant
 - Vt existant
 - Mixtange / vt existant
 - Vt proposé
 - Mixtange / vt proposé
 - Vt aménagé

 **GOLD BULLION**
CORPORATION

Siège Social
1125 Boulevard Laurier, Bureau 2005
Montréal, Québec
H3B 2J3

Téléphone: 514 357 4000
Fax: 514 357 4020

CONSULTANTS

PROJET DE MINE D'OR GOLD BULLION
GRANADA

**IMPLANTATION
DES INSTALLATIONS**

ETUDE DE PRÉFASIBILITÉ

CARTÉ X

Date: 10/01/2012

Gold Bullion – Granada

+/- 6,000 tonnes mined per day



Large-Scale Exploitation

+/- 170,000 tonnes mined per day



THE MINERAL PROCESSING

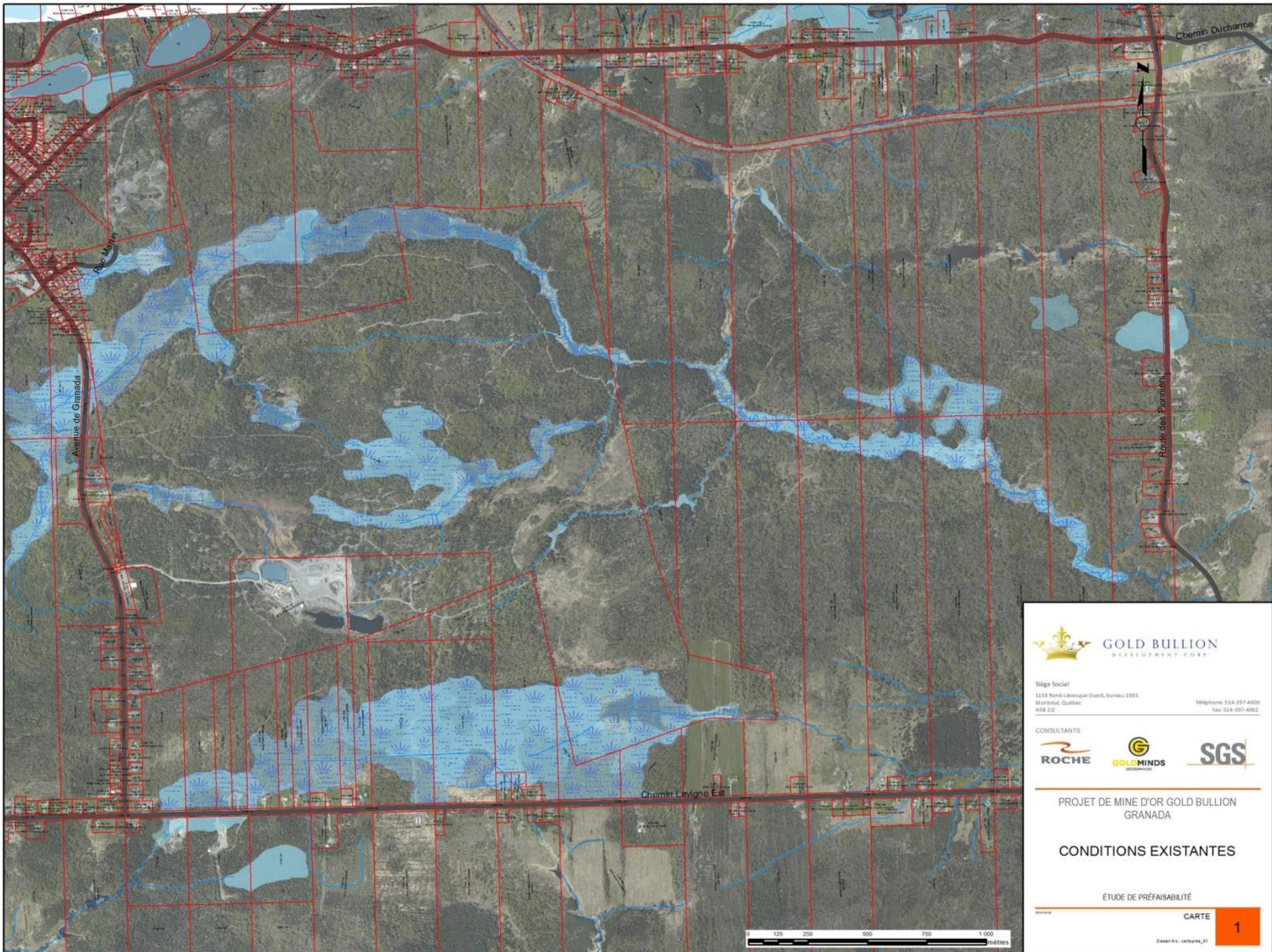
👑 Gold Bullion has signed an agreement with the mining company Iamgold to treat ore from the Granada pit;

👑 Advantages:

- No tailings pond
- Consolidation of a local company
- Exchange of expertise of the rehabilitation of land

👑 Disadvantages :

- Trucks on the road
- Transfer of jobs to another area of the region



Siège Social
 1155 René-Lévesque Ouest, Bureau 1005
 Montréal, Québec
 H3B 2J2

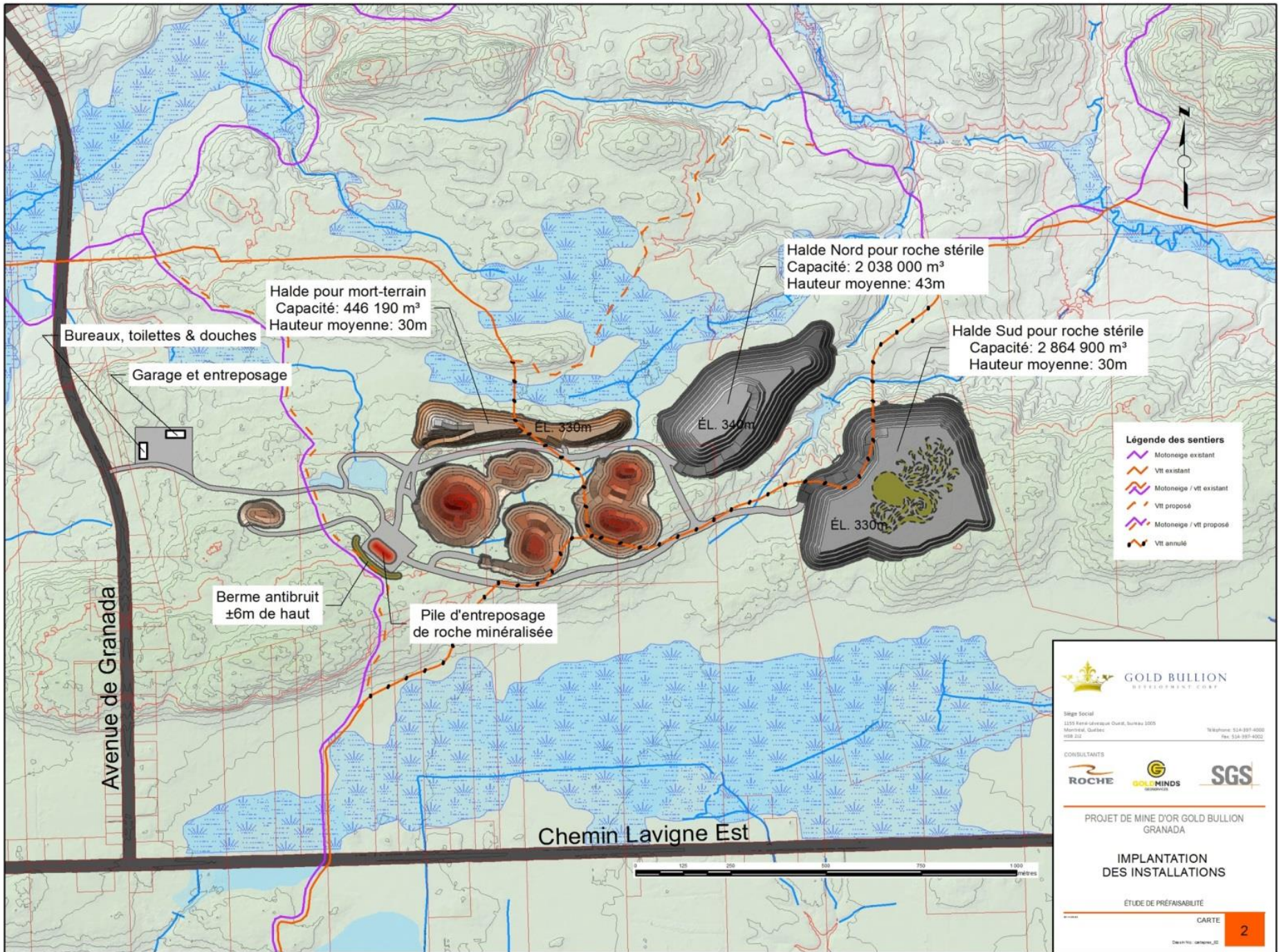
Téléphone: 514-317-4000
 Fax: 514-317-4002



**PROJET DE MINE D'OR GOLD BULLION
 GRANADA**

CONDITIONS EXISTANTES

ÉTUDE DE PRÉFAISABILITÉ



Bureaux, toilettes & douches

Garage et entreposage

Halde pour mort-terrain
Capacité: 446 190 m³
Hauteur moyenne: 30m

Halde Nord pour roche stérile
Capacité: 2 038 000 m³
Hauteur moyenne: 43m

Halde Sud pour roche stérile
Capacité: 2 864 900 m³
Hauteur moyenne: 30m

ÉL. 330m

ÉL. 340m

ÉL. 330m

Berme antibruit
±6m de haut

Pile d'entreposage
de roche minéralisée

Avenue de Granada

Chemin Lavigne Est

- Légende des sentiers**
- Motoneige existant
 - VTT existant
 - Motoneige / vtt existant
 - VTT proposé
 - Motoneige / vtt proposé
 - VTT annulé





GOLD BULLION
RESOURCES CORP.

Siège Social
1275 Avenue Laurier Ouest, bureau 1005
Montréal, Québec
H3B 2J2

Téléphone: 514-397-4000
Fax: 514-397-4002

CONSULTANTS





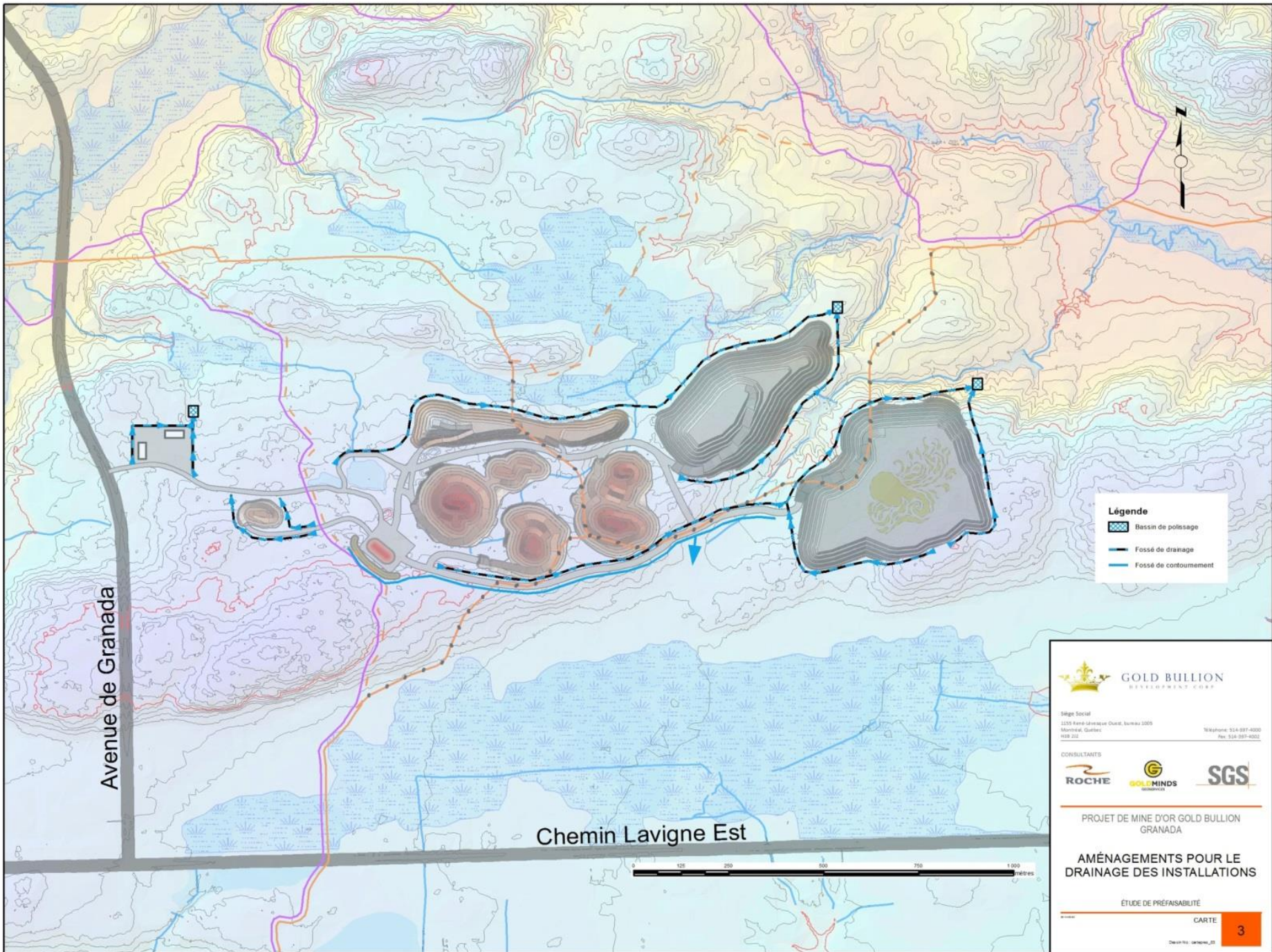
PROJET DE MINE D'OR GOLD BULLION GRANADA

**IMPLANTATION
DES INSTALLATIONS**

ÉTUDE DE PRÉFASIBILITÉ

CARTE

2



Légende

-  Bassin de polissage
-  Fossé de drainage
-  Fossé de contournement

 **GOLD BULLION**
RESOURCES CORP.

Siège Social
1205 Avenue Jean-Jacques Ouellet, bureau 3005
Montréal, Québec
H3B 2J2

Téléphone: 514-997-4000
Fax: 514-997-4002

CONSULTANTS

PROJET DE MINE D'OR GOLD BULLION GRANADA

AMÉNAGEMENTS POUR LE DRAINAGE DES INSTALLATIONS

ÉTUDE DE PRÉFaisabilité





Avenue de Granada

Chemin Lavigne Est



MAIN TOPICS OF INTEREST

TOPICS OF INTEREST ANTICIPATED BY THE PROMOTER

-  **Ground and surface water**
-  Noise and vibration
-  Traffic
-  Division of territory

GRANADA MINING PROJECT GROUNDWATER STUDY



ROCHE

The Roche logo consists of a stylized, orange, wavy line above the word "ROCHE" in a bold, dark grey, sans-serif font.

GRANADA MINING PROJECT GROUNDWATER STUDY

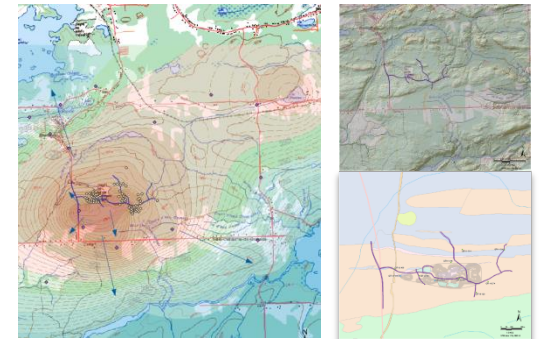
Presentation of the results obtained
By Léonard Agassounon, Hydrogeologist

OBJECTIVES OF THE STUDY

- Collect data on groundwater in the sector of the future mine
- Identify areas that may be affected by the activities of the future mine
- Documenting water supply of wells of residents
- Estimate the potential impacts of lowering the water by the mine
- Propose mitigation measures

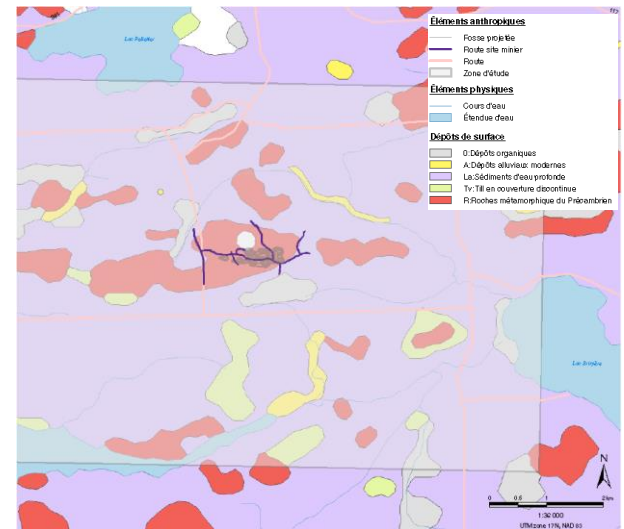
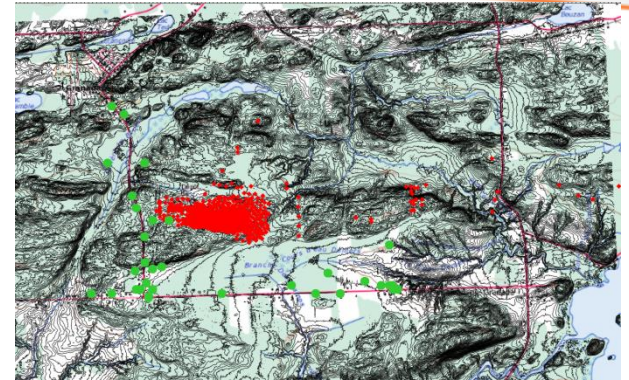
STUDY METHODOLOGY

- Collection of information
- Fieldwork
- Inventory of water users around Gold Bullion site
- Creating a hydrogeological model
- Numerical simulations
- Impact assessment



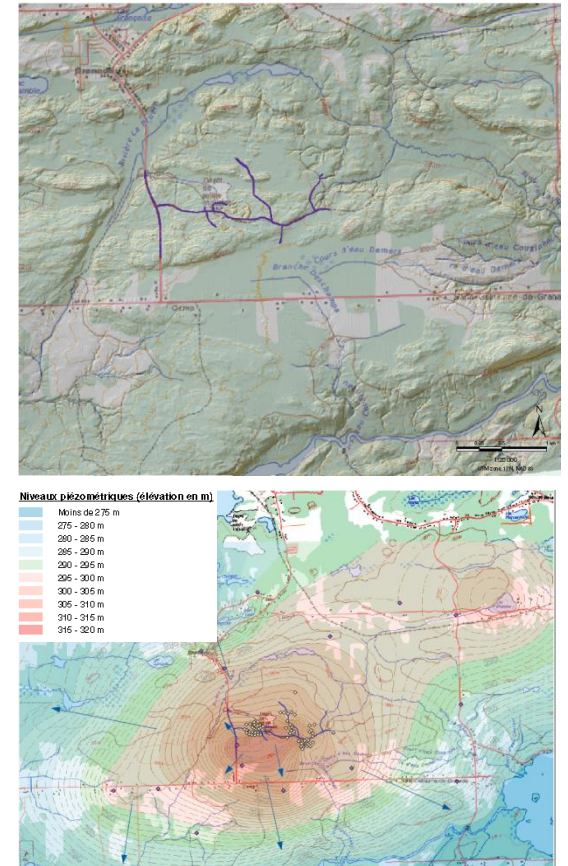
COLLECTION OF INFORMATION

- Databases of exploration drilling (topographic, geological...)
- Maps (topographic, geological ...)
- Database of pit SIH MDDELCC
- Previous studies



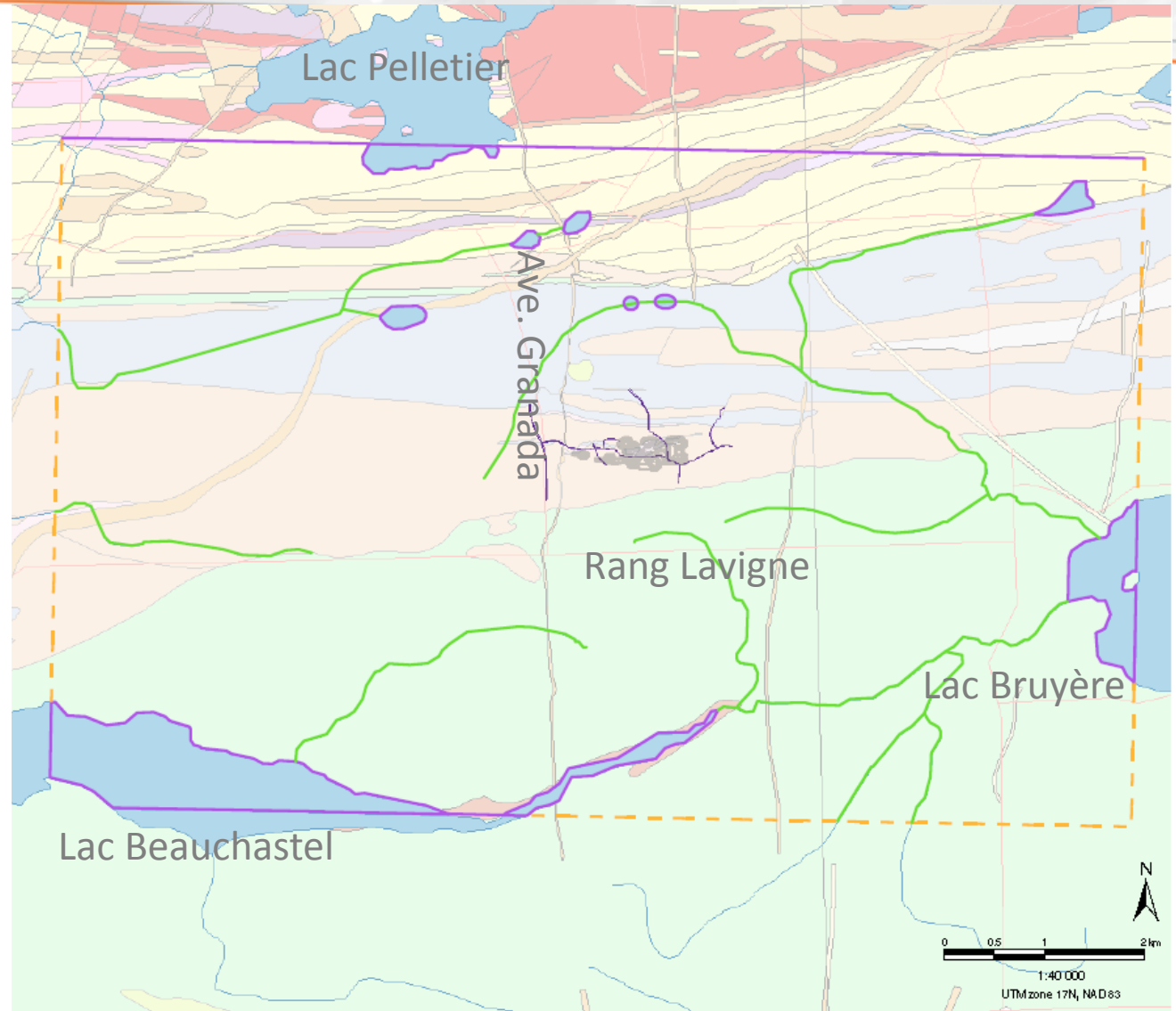
FIELDWORK

- Inventory of water wells SIH
- Measures of water levels on the site
- Establishment of Lidar topography
- Hydraulic tests to determine the hydrogeological properties
- Measuring the quality of water in the drilling site and shore wells (background noise)
 - 4 exploration drilling
 - 27 private wells



MAKING OF HYDROGEOLOGICAL SIMULATIONS

Physical limitations of the model



MAKING OF HYDROGEOLOGICAL SIMULATIONS

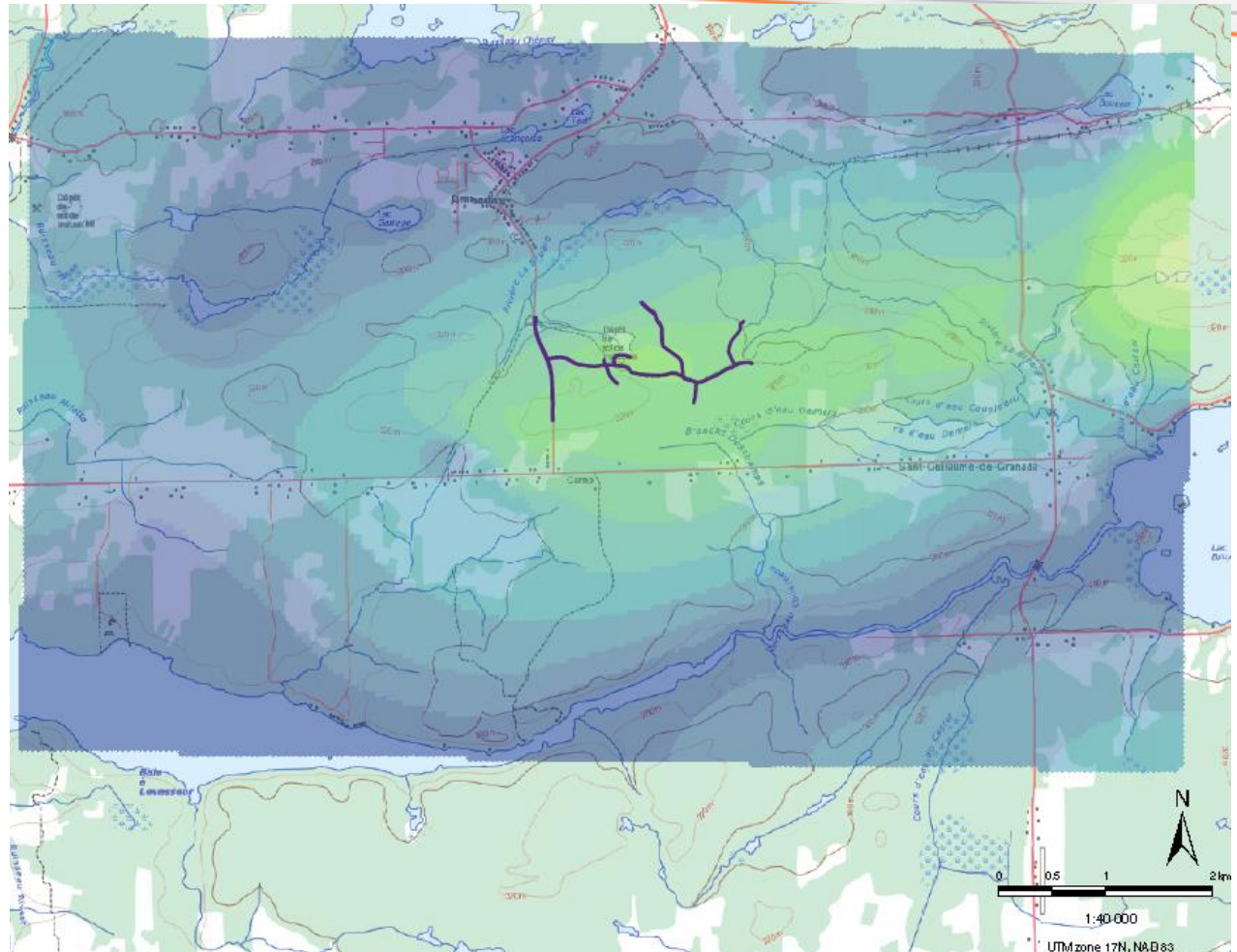
Simulated curves
of current water
level
(without
drainage)

Éléments anthropiques

— Route site minier

Modélisation hydrogéologique

- Moins de 280 m
- 280 - 285 m
- 285 - 290 m
- 290 - 295 m
- 295 - 300 m
- 300 - 305 m
- 305 - 310 m
- 310 - 315 m
- 315 - 320 m
- 320 - 325 m

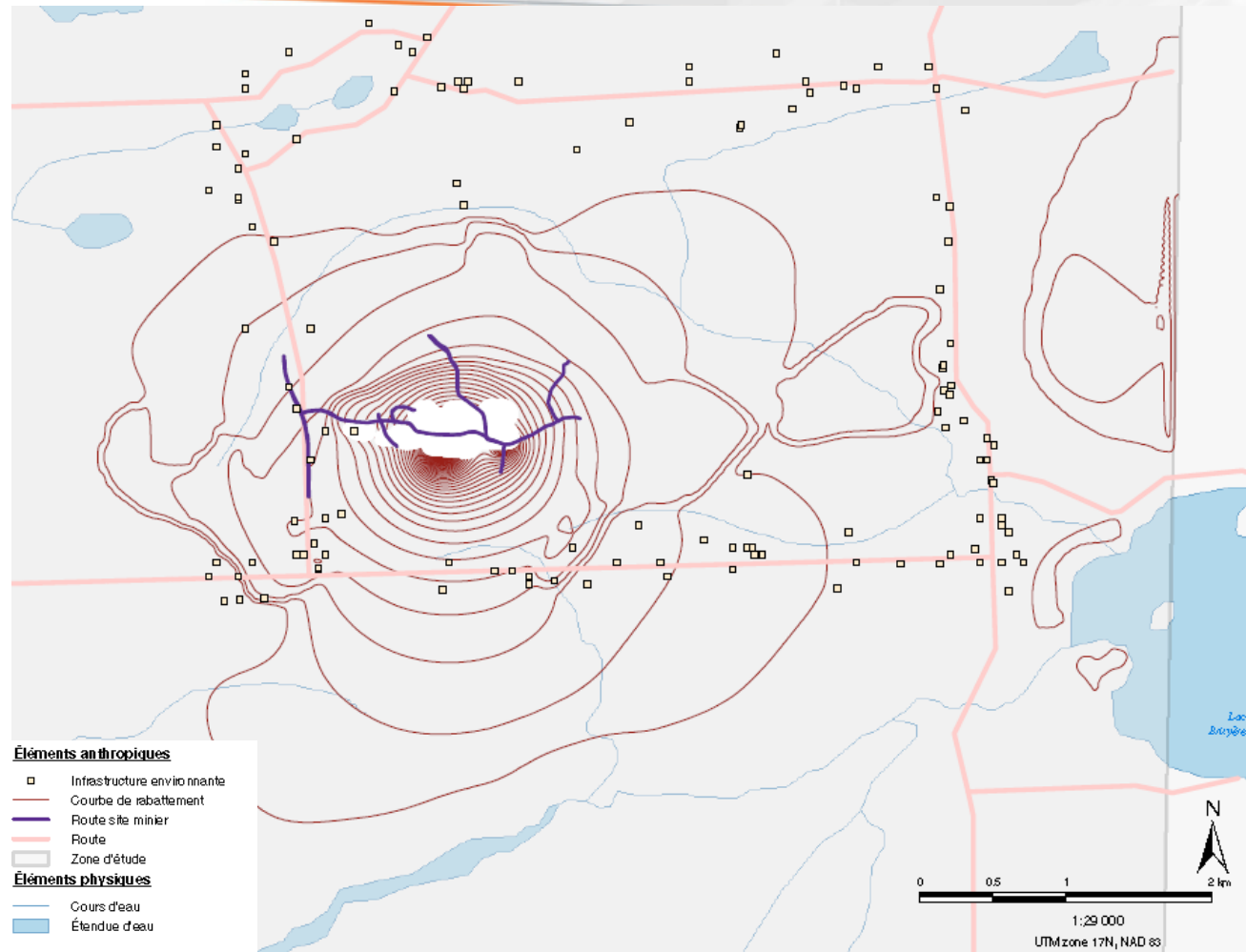


CREATION OF SIMULATIONS: POSSIBLE IMPACTS

Simulated maximum impact

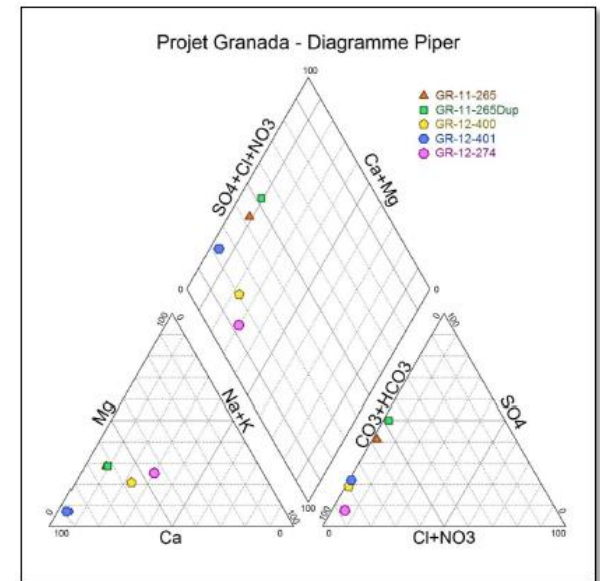
(the worst case), that is to say, lowering of the water table from the first year, together with the pit.

In reality, the impacts will be carried out gradually (in phases) which will cause a rebalancing of the table.



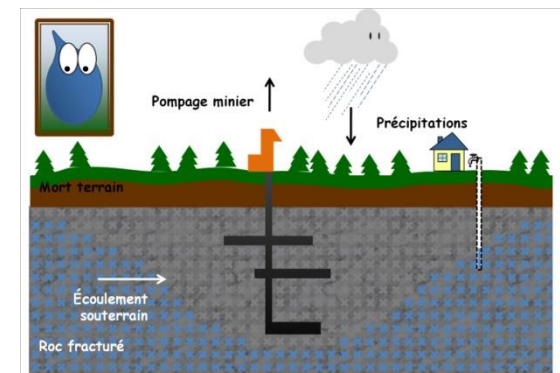
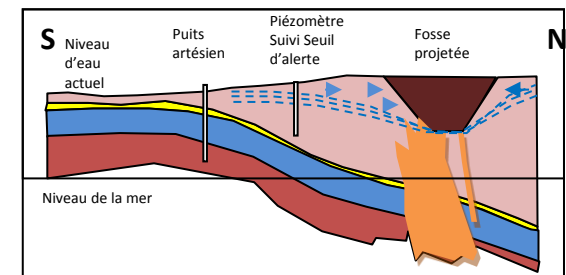
RESULTS OF QUALITY OF GROUNDWATER

- The water quality of the rock sampled in four exploration drilling site shows that the water meets the requirements at the discharge point of the Directive 019
- Some wells showed overrun of arsenic and / or lead. Each owner recieved the results with explanations.







POSSIBLE IMPACTS AND MITIGATION MEASURES

- **Water Quantity:** The lowering of the water table on the mine site can generate a level reduction in private wells.
 - Lowering of the water provided from 0 to 5m on the roads Granada and Lavigne.
 - Monitoring water level, triggering action, if lowering of the level of which half is provided.
- **Water Quality:** During the mining activity (pumping), groundwater will flow into the pits (pumps).
 - Low risk of contamination
 - Monitoring of water quality



GOLD BULLION IS LISTENING TO CONCERNS

-  Reduce the negative impacts of the program and seek to prevent when possible
-  Respond promptly to comments and questions of the environment and take corrective action as required
-  Establish a healthy, transparent and constructive dialogue with stakeholders
-  Leave us your email contact information so that we can send you important information about the project



GOLD BULLION
DEVELOPMENT CORP

WE ARE LISTENING

Gold Bullion Development Corp.

1555, René -Lévesque Ouest , Suite 1005

Montreal (Quebec) H3B 2J2

Telephone : 514. 397-4000

Email : granada@goldbulliondevelopmentcorp.com

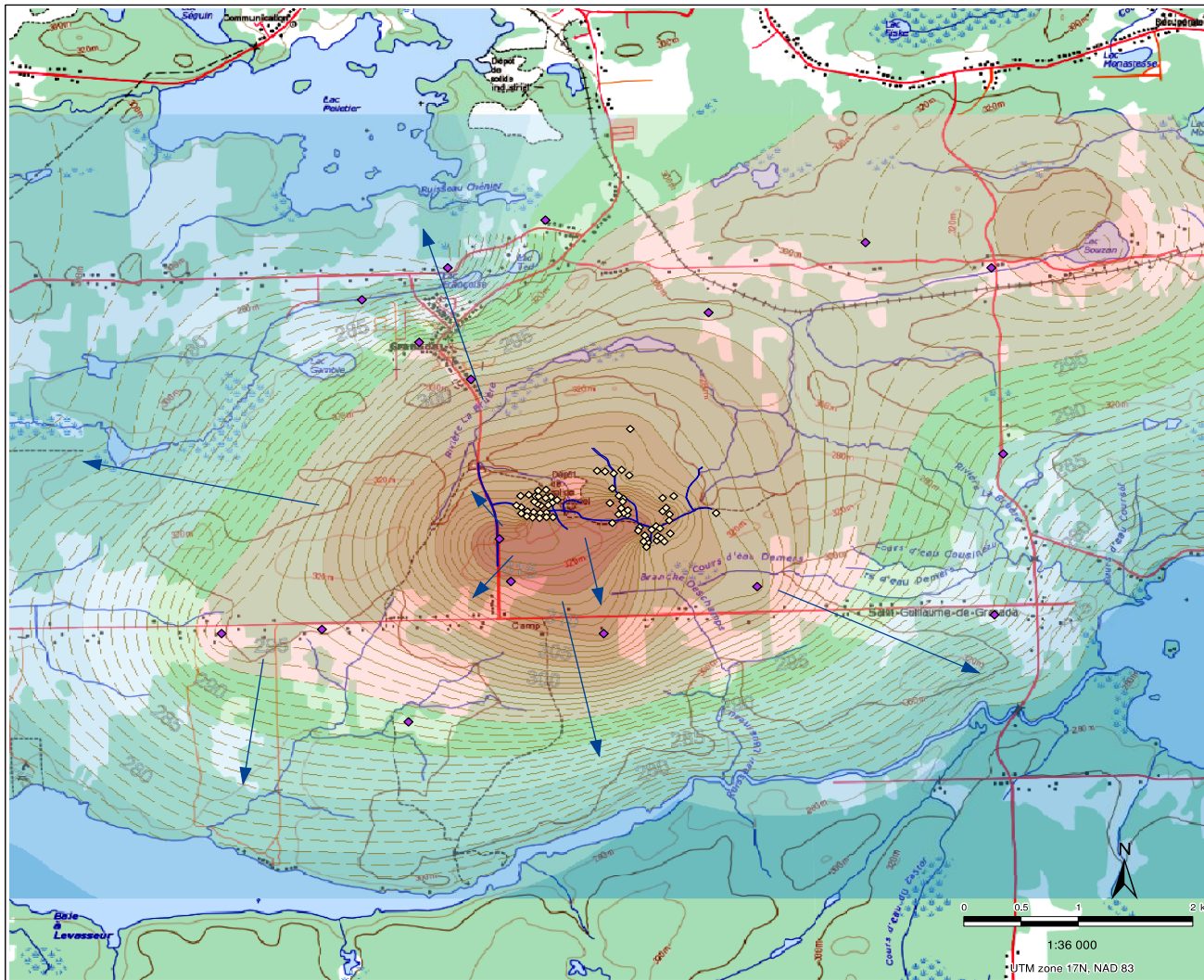
Website: www.goldbulliondevelopmentcorp.com



GOLD BULLION
DEVELOPMENT CORP

QUESTIONS ?

TITLE

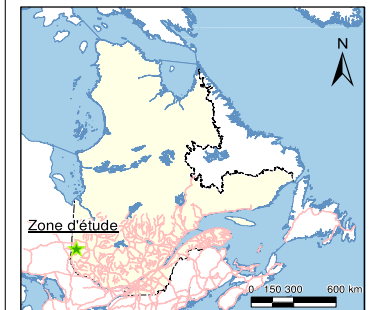


Éléments anthropiques

- ◇ Forages mesurés
- ◆ Puits SIH
- Route site minier
- ➔ Direction d'écoulement
- Niveau mesuré sur le site (11 juin 2013)
- Niveau extrapolé des données du SIH

Niveaux piézométriques (élévation en m)

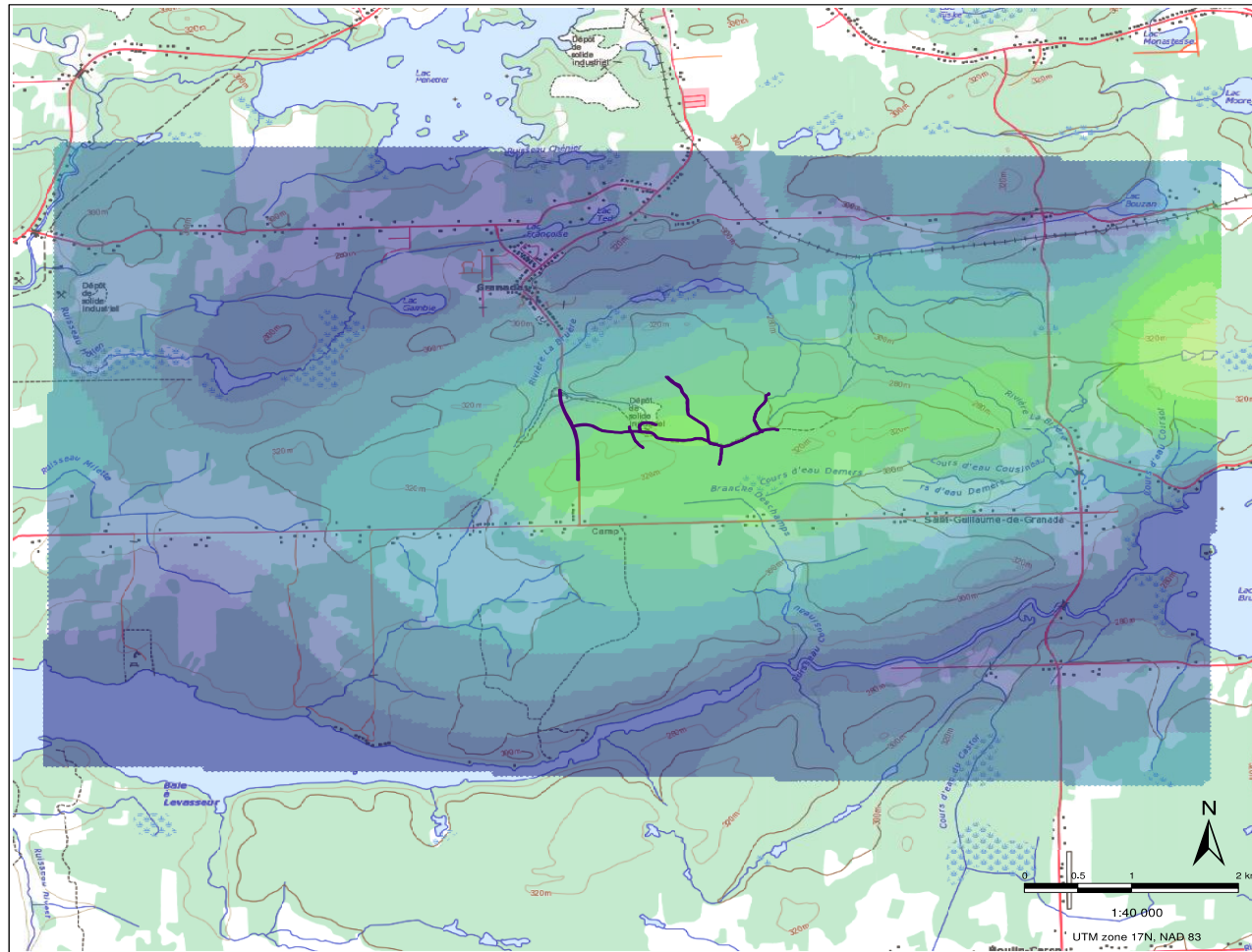
- Moins de 275 m
- 275 - 280 m
- 280 - 285 m
- 285 - 290 m
- 290 - 295 m
- 295 - 300 m
- 300 - 305 m
- 305 - 310 m
- 310 - 315 m
- 315 - 320 m



Étude hydrogéologique
- Projet minier Granada

Élévation de la nappe d'eau souterraine
dans l'aquifère rocheux

TITLE

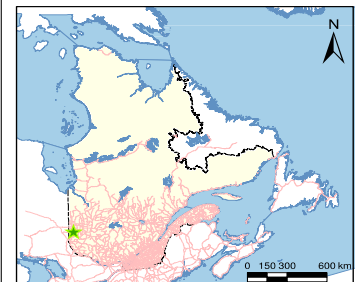


Éléments anthropiques

Route site minier

Modélisation hydrogéologique

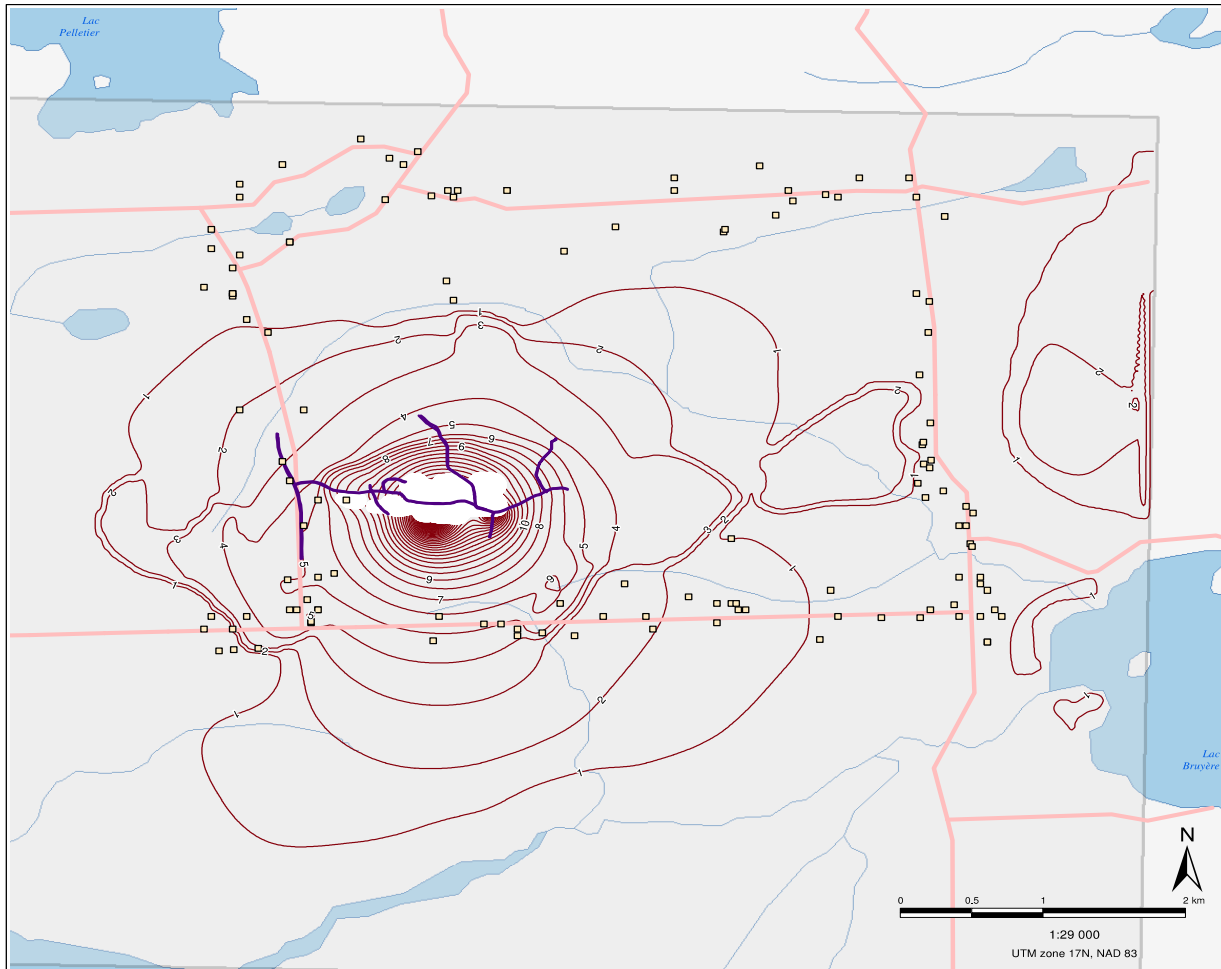
- Moins de 280 m
- 280 - 285 m
- 285 - 290 m
- 290 - 295 m
- 295 - 300 m
- 300 - 305 m
- 305 - 310 m
- 310 - 315 m
- 315 - 320 m
- 320 - 325 m



Étude hydrogéologique -
Projet minier Granada

Piézométrie simulée
dans l'aquifère du roc

POSSIBLE IMPACT ZONE

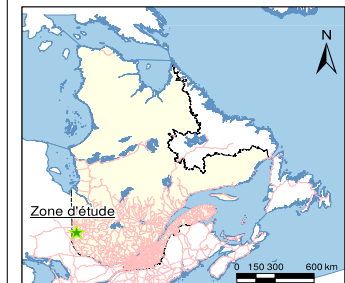


Éléments anthropiques

- Infrastructure environnante
- Courbe de rabattement
- Route site minier
- Route
- Zone d'étude

Éléments physiques

- Cours d'eau
- Étendue d'eau



Étude hydrogéologique -
Projet minier Granada

**Surface de rabattement des
niveaux d'eau souterraine
(pompage en régime permanent)**

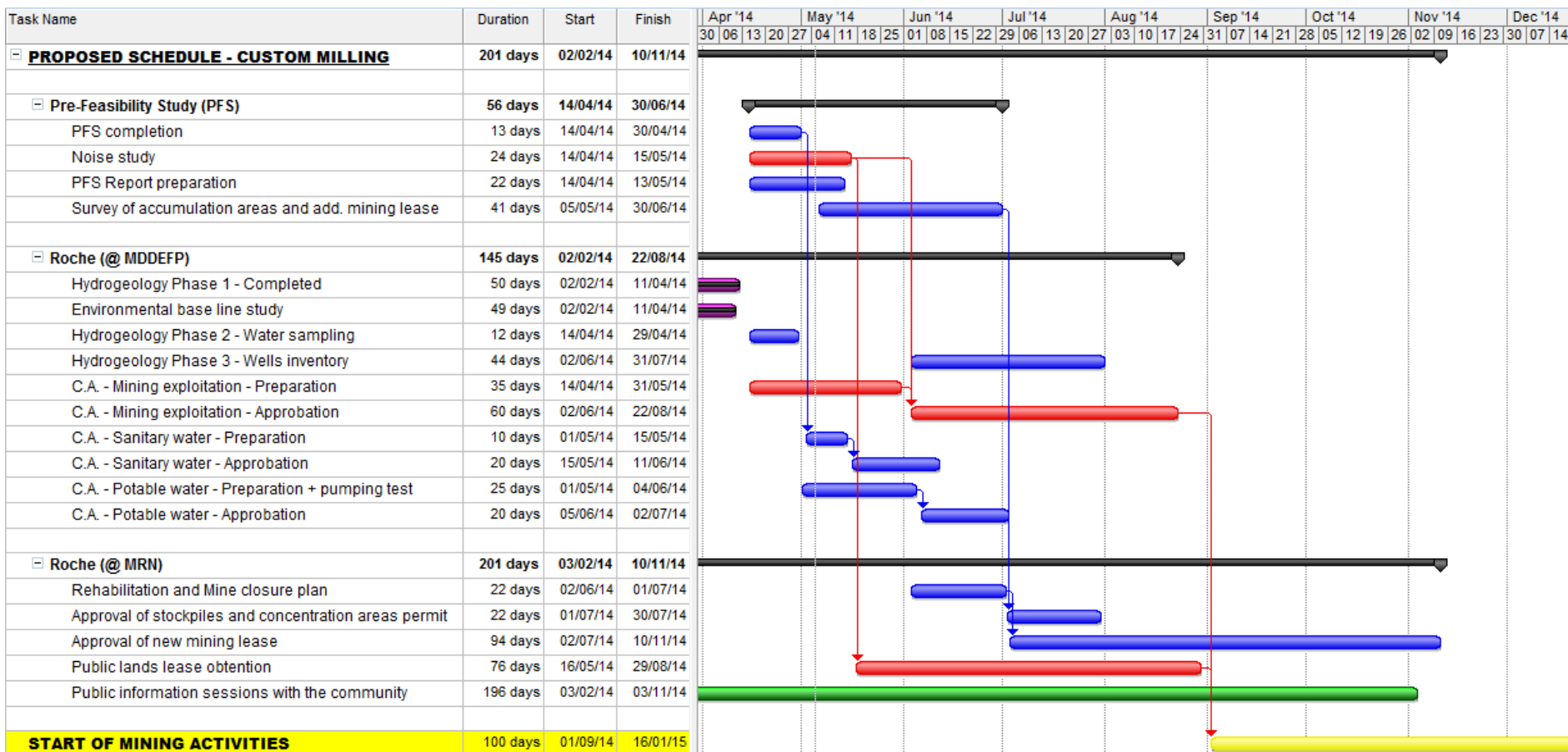


Date: 2014-02-09
Fichier: 104888-003_Rabattement_2002014
Base cartographique: Hydrographie, GNDT

© Le ministère des Ressources naturelles Canada. Tous droits réservés.

Carte
6.2

WORK CALENDAR



EXISTING OPENINGS

