



GOLD BULLION
DEVELOPMENT CORP

GRANADA PROJECT

February 2014

WWW.GOLDBULLIONDEVELOPMENTCORP.COM

TSX-V: **GBB**

OTC PK: **GBBFF**

FRANKFURT: **B6D**

LEGAL DISCLAIMER

No stock exchange, securities commission or other regulatory authority has approved or disapproved the information contained herein. This presentation includes certain "forward-looking statements". All statements, other than statements of historical fact, that address activities, events or developments that Gold Bullion Development Corp. believes, expects, anticipates or plans will or may occur in the future are forward-looking statements. Forward-looking statements are often, but not always, identified by the use of words such as "seek", "anticipate", "believe", "plan", "estimate", "expect", and "intend" and statements that an event or result "may", "will", "can", "should", "could", or "might" occur or be achieved and other similar expressions. These forward-looking statements reflect the current internal projections, expectations or beliefs of Gold Bullion Development Corp. based on information currently available to Gold Bullion Development Corp. In addition, all statements other than statements of historical fact, included in this presentation, including without limitation statements regarding potential mineralization and reserves, exploration results, and future plans and objectives of Gold Bullion Development Corp., are forward-looking statements that involve various risks and uncertainties. The mineral resource estimates contained herein are only estimates and no assurance can be given that any particular level of recovery of minerals will be realized or that an identified resource will ever qualify as a commercially mineable or viable deposit which can be legally and economically exploited. In addition, the grade of mineralization ultimately mined may differ from the one indicated by the drilling results and the difference may be material. The estimated resources described herein should not be interpreted as assurances of mine life or of the profitability of future operations. There can be no assurance that forward-looking statements will prove to be accurate and actual results and future events could differ materially from those anticipated in such statements. Important factors that could cause actual results to differ materially from Gold Bullion Development Corp. expectations include, among others, risks related to the start-up of operations, the actual results of current exploration activities, conclusions of economic evaluations and changes in project parameters as plans continue to be refined as well as future prices of gold, silver and base metals. Although Gold Bullion Development Corp. has attempted to identify important factors that could cause actual results to differ materially, there may be other factors that cause results not to be as anticipated, estimated or intended. There can be no assurance that such statements will prove to be accurate as actual results and future events could differ materially from those anticipated in such statements. Accordingly, readers should not place undue reliance on forward-looking statements. Mr. Frank J. Basa, P.Eng., President/CEO of Gold Bullion Development Corp., is the qualified person under the meaning of National Instrument 43-101 and has reviewed the data in this presentation.

PLAN OF THE PRESENTATION

- 👑 Presentation of the Company, Gold Bullion
- 👑 Presentation of the Granada project
- 👑 Main topics of interest
- 👑 Information process
- 👑 What comes next
- 👑 Question period

GOLD BULLION IN BRIEF

- ✠ Granada project since 2006
- ✠ Based in **Montreal**
- ✠ Stock listings: TSX-V: GBB
OTCPK: GBBFF
Frankfurt: B6D

Market Capitalization as at February 25, 2014

Share Price:	CDN\$0.035
Common Shares:	257,606,874
Fully Diluted Shares:	290,961,112
Market Capitalization:	\$9.01M
Management Ownership:	Approx. 5%



GOLD BULLION
DEVELOPMENT CORP

GOLD BULLION AT A GLANCE

Mr. Frank Basa

President and CEO

Mrs. Annemette Jorgensen

Director, Corporate Development

Mr. Claude Duplessis

Eng., project leader, SGS Geostat



GOLD BULLION
DEVELOPMENT CORP

Gold Bullion's strategy of taking a fresh and systematic approach to safe and responsible exploration on past-producing precious metal properties in mining-friendly jurisdictions is designed to discover significant new resources that can be efficiently developed, thereby rapidly increasing shareholder wealth and generating benefits for communities where the Company operates.

OUR VISION

OBJECTIVES OF THE MEETING

- 👑 **Inform you** about the **Company**
- 👑 **Inform you** about the **Granada project**
- 👑 Learn about your **concerns** and your **interests**
- 👑 Determine your **interest** in pursuing the **information process**
- 👑 Answer your **questions**

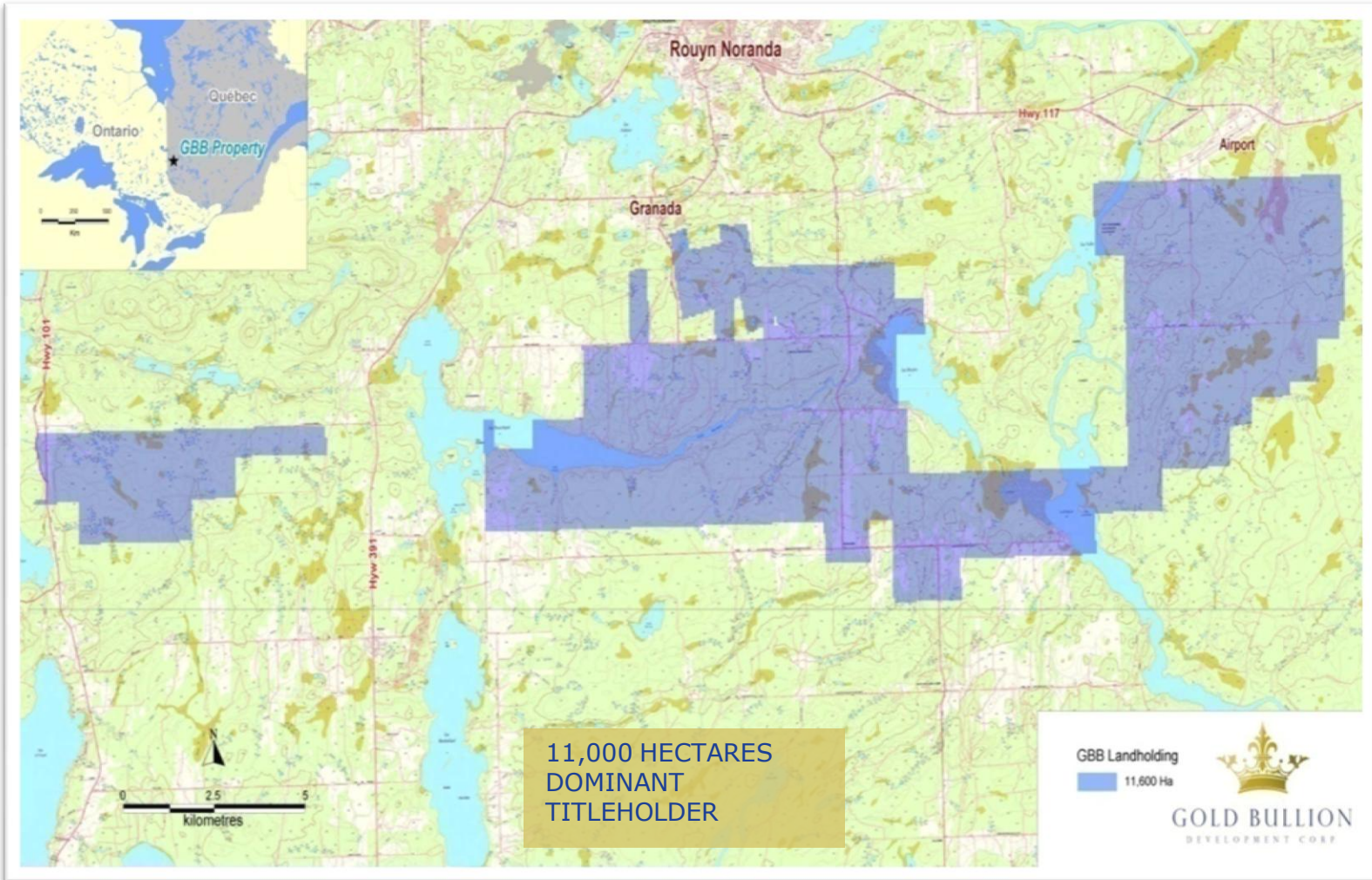
OUR COMMITMENT

Gold Bullion has **willingly** launched a consultation process to **get some feedback** from interested communities and thus **adapt, whenever possible, its practices** in an effort to **minimize the social and environmental impacts** of its activities.

OUR VALUES

- 👑 We work in a **responsible** manner
- 👑 We manage the risk related to our activities and we ensure the **safety of workers** during our work
- 👑 We respect the **environment**
- 👑 We do everything we can to manage our activities **in a responsible and sustainable manner** so as to minimize our environmental footprint by reusing waste rock for other purposes
- 👑 We are **listening**
- 👑 We collect the **concerns and suggestions of local communities** and we adapt our projects whenever possible
- 👑 We are **transparent**

LOCATION OF THE GRANADA PROPERTY

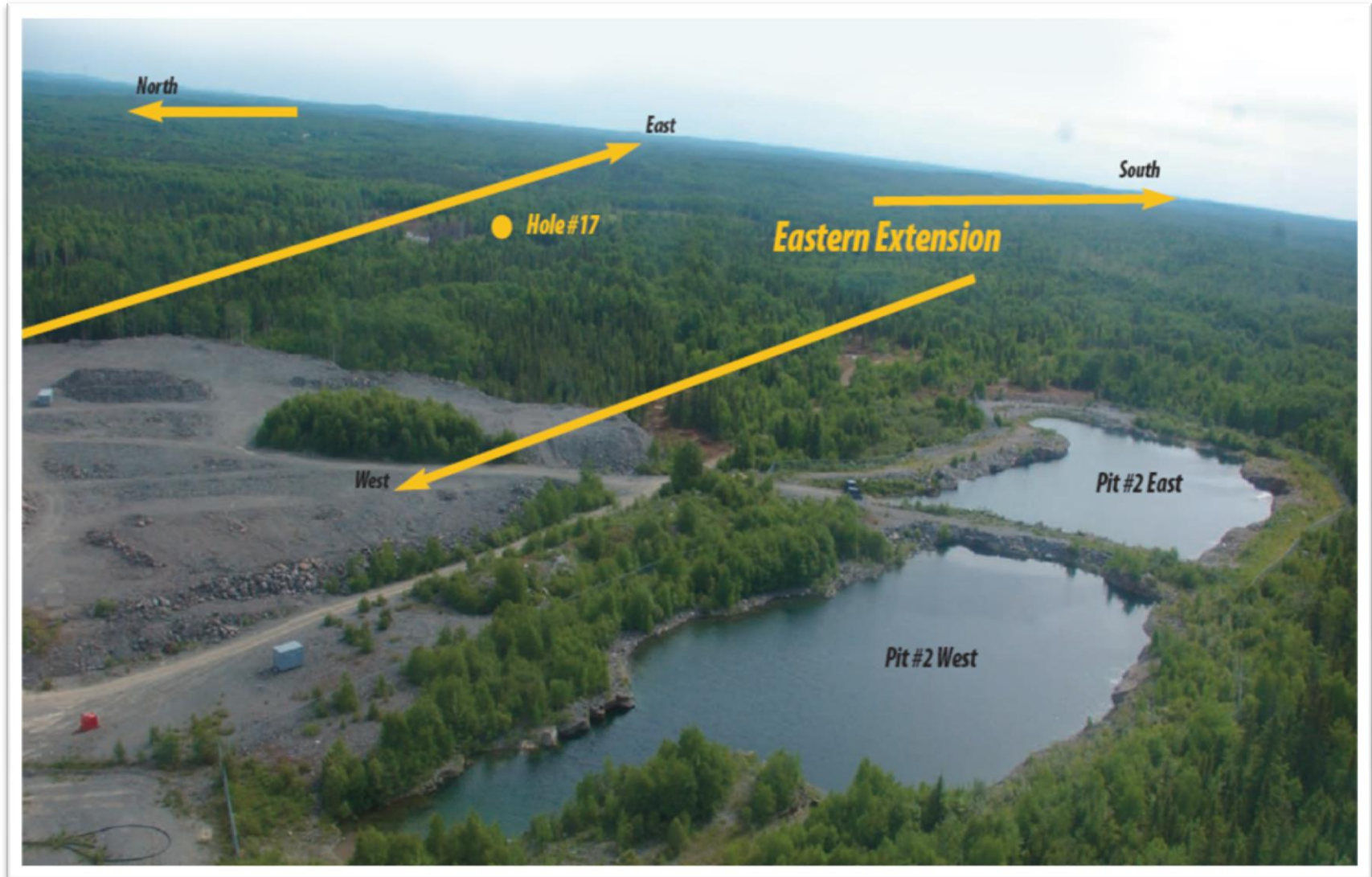


11,000 HECTARES
DOMINANT
TITLEHOLDER

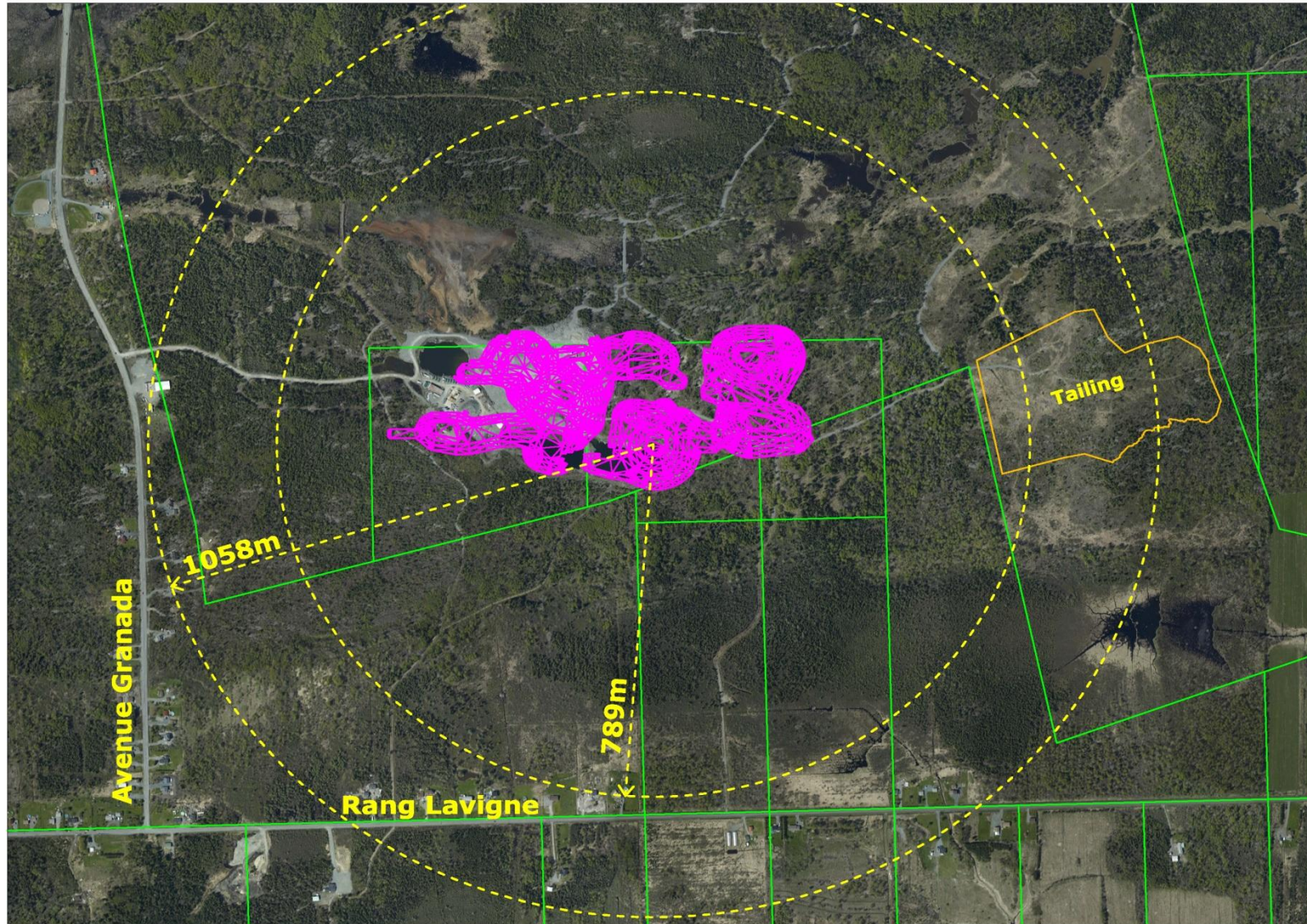
GBB Landholding
11,600 Ha



VIEW OF CURRENT SITE



DISTANCE OF INFRASTRUCTURE



GRANADA – A HISTORICAL PRODUCER

- 👑 **50,000** ounces of gold from 1930-1935
- 👑 Major fire in 1935
- 👑 More than **500 drill holes** during the 1980s and 1990s

To help protect your privacy, PowerPoint prevented this external picture from being automatically downloaded. To download and display this picture, click Options in the Message bar, and then click Enable external content.

PREVIOUS WORK

2009

- 25 holes (2,817 m).

2010 and 2011

- 319 holes (more than 75,000 m).

2012

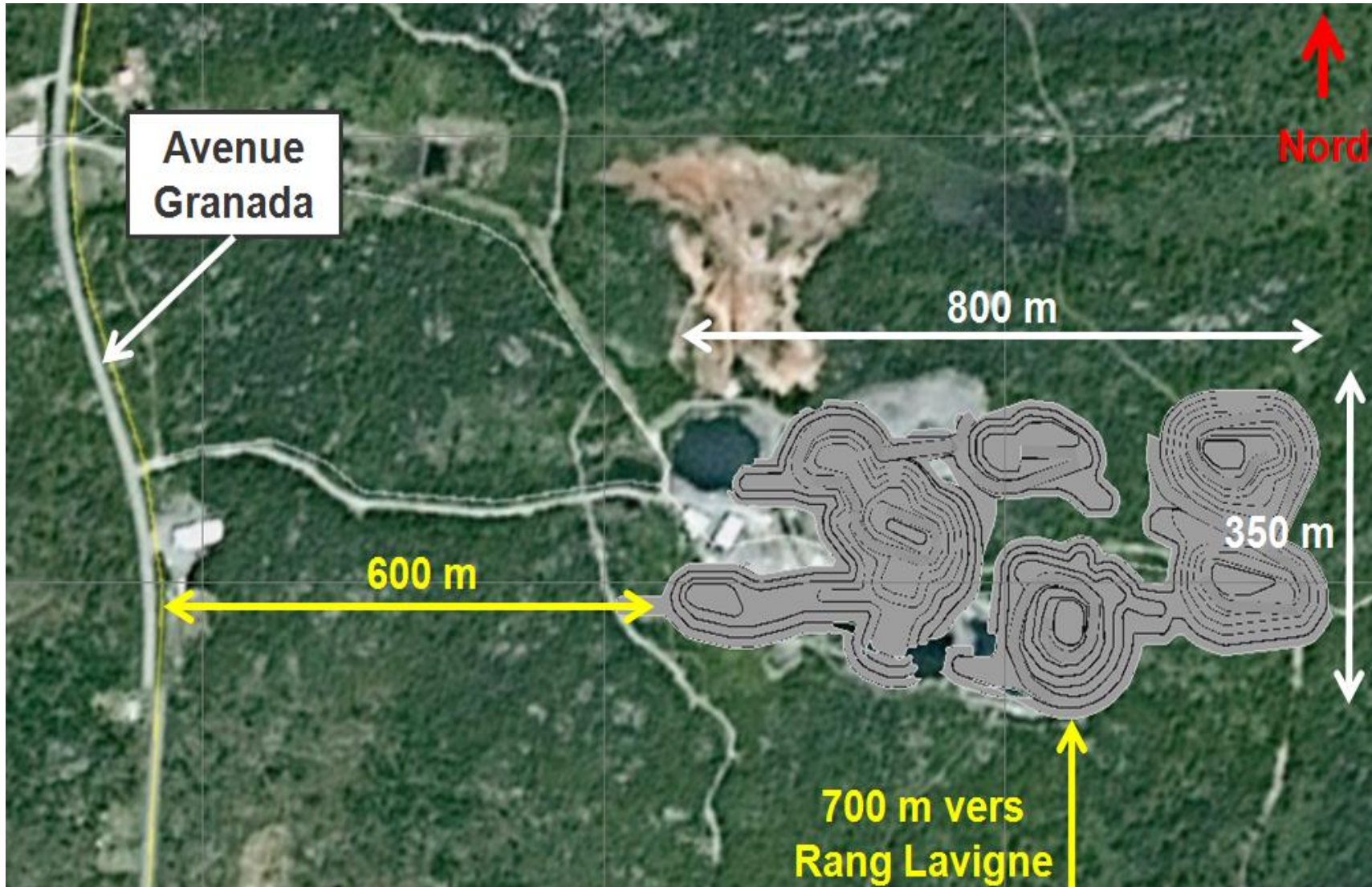
- Deep drilling (more than 8,300 m).

POTENTIAL

UPDATED RESOURCE ESTIMATE ON THE GRANADA GOLD PROPERTY

The mining project being considered on the Granada property is an open pit of 400,000 to 500,000 tonnes at an average grade of 4-5 g/t. Underground mining is subsequently considered.

ACTIVITIES AND INFRASTRUCTURE





DESIGN DE MINE À CIEL OUVERT
OPTIMISÉ POUR L'EXTRACTION
DU MINÉRAI À HAUTE TENEUR

ENTREPOSAGE DU MORT-TERRAIN

ENTREPOSAGE DE LA
ROCHE STÉRILE

BASSIN DE POLISSAGE

SECTEUR POUR L'USINE

ENTREPOSAGE DES RÉSIDUS
DE L'USINE 550 000m³
(HAUTEUR MAXIMALE DE LA DIGUE 15m)

BASSIN DE POLISSAGE

TOUR DE DÉCANTATION

LÉGENDE
 FOSSÉ DE DÉVIATION
 FOSSÉ DE CAPTAGE

GOLD BULLION
DEVELOPMENT CORP.
 Siège Social
 1310 Avenue du Parc (Ouest, Niveau 1005)
 Montréal, Québec
 H3B 2J2
 CONSULTANTS

PROJET DE MINE D'OR GOLD BULLION
GRANADA

LOCALISATION DES
INSTALLATIONS

FIGURE 1

Dessin No. 10_100000_001.dwg

GRANADA PROJECT - ORDER OF MAGNITUDE

Gold Bullion – Granada

+/- 6,000 tonnes minées par jour



Exploitation à grande échelle

+/- 170,000 tonnes minées par jour



ORE PROCESSING

2 possible scenarios

- ✠ Custom milling of ore in one of the existing mills in the region
- ✠ Processing facility set up on site

ECONOMIC POTENTIAL OF THE PROJECT

- ✠ Investments on the order of **\$200M**
 - ✠ Between \$5M and \$30M in the short term
 - ✠ Between \$100M and \$200M in the long term
- ✠ Creation of **30 to 150 jobs**
- ✠ **Economic benefits** for the community

WHAT COMES NEXT



SHORT TERM - 6 MONTHS:

- Completion of environmental study (underway)
- Completion of pre-feasibility study (PFS)
- File application for a Certificate of Authorization



MEDIUM TERM - UNTIL THE END OF 2014:

- Drilling programs (in the fall)
- Development of processing capacity on site
- Mine development to 500 t/day

WHAT COMES NEXT







LONG TERM - 2 TO 3 YEARS

- Development of underground mine
- Possible construction of processing plant on site
- Progressive rehabilitation of site

MAIN TOPICS OF INTEREST

TOPICS OF INTEREST ANTICIPATED BY THE DEVELOPER

-  Groundwater and surface water
-  Traffic
-  Noise and vibrations
-  Land use

MAIN TOPICS OF INTEREST

GROUNDWATER AND SURFACE WATER

Possible sources of impact:



Dewatering of open pits



Dewatering of former mine



Pumped water discharged in the environment

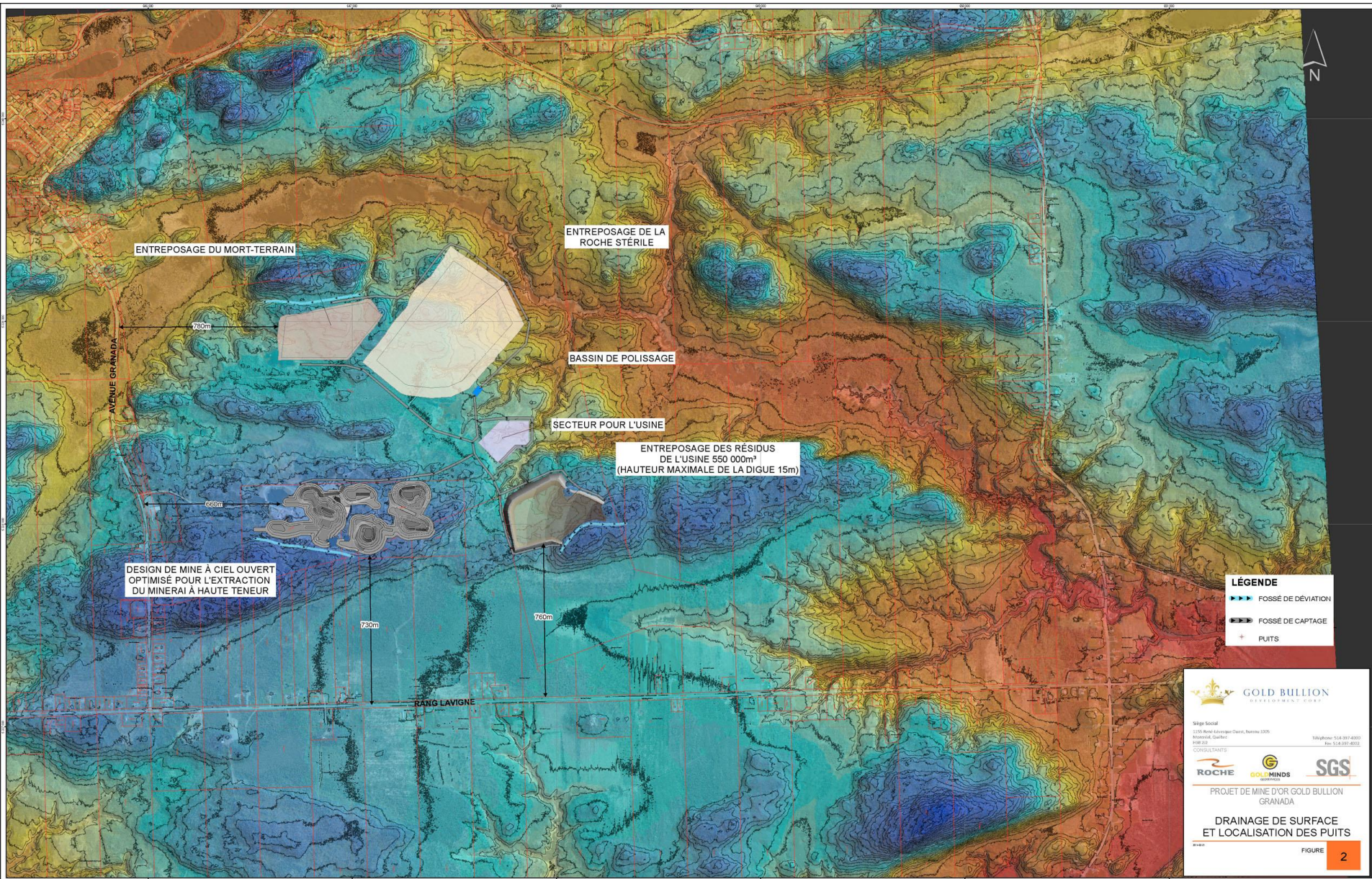
Concerns about:



Quality and level of water bodies in the area



Water level in residential wells



- LÉGENDE**
- ▶▶▶ FOSSE DE DÉVIATION
 - ▶▶▶ FOSSE DE CAPTAGE
 - + PUIITS


GOLD BULLION
 CONSULTING

Siège Social
 1510 Route Avignon Ouest, Bureau 1005
 Montréal, Québec H3R 2J8
 Téléphone: 514 391-4200
 Fax: 514 391-8532

COMPAGNIES:

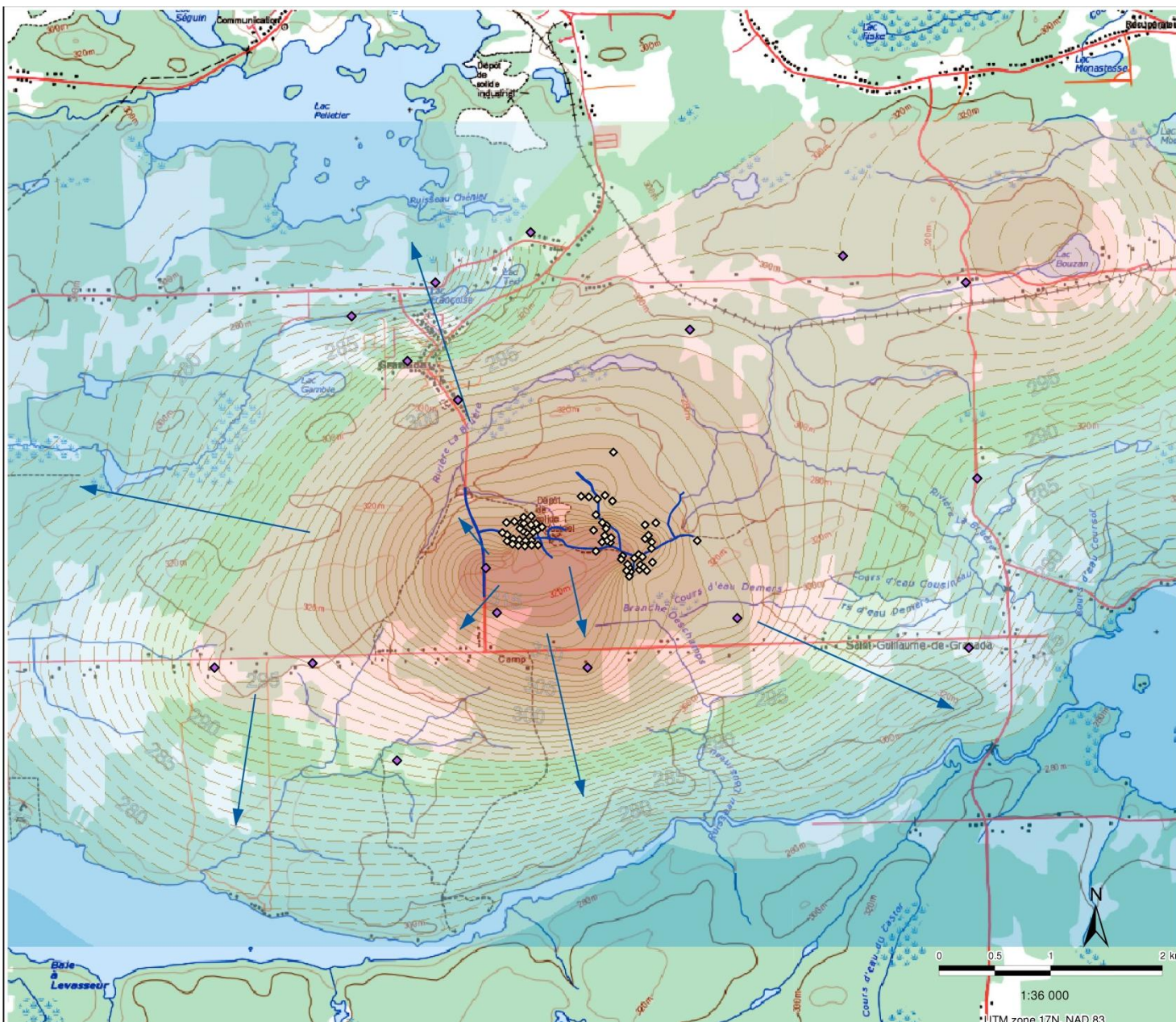




PROJET DE MINE D'OR GOLD BULLION
 GRANADA

**DRAINAGE DE SURFACE
 ET LOCALISATION DES PUIITS**

FIGURE **2**



Éléments anthropiques

- ◇ Forages mesurés
- ◇ Puits SIH
- Route site minier
- ➔ Direction d'écoulement
- Niveau mesuré sur le site (11 juin 2013)
- Niveau extrapolé des données du SIH

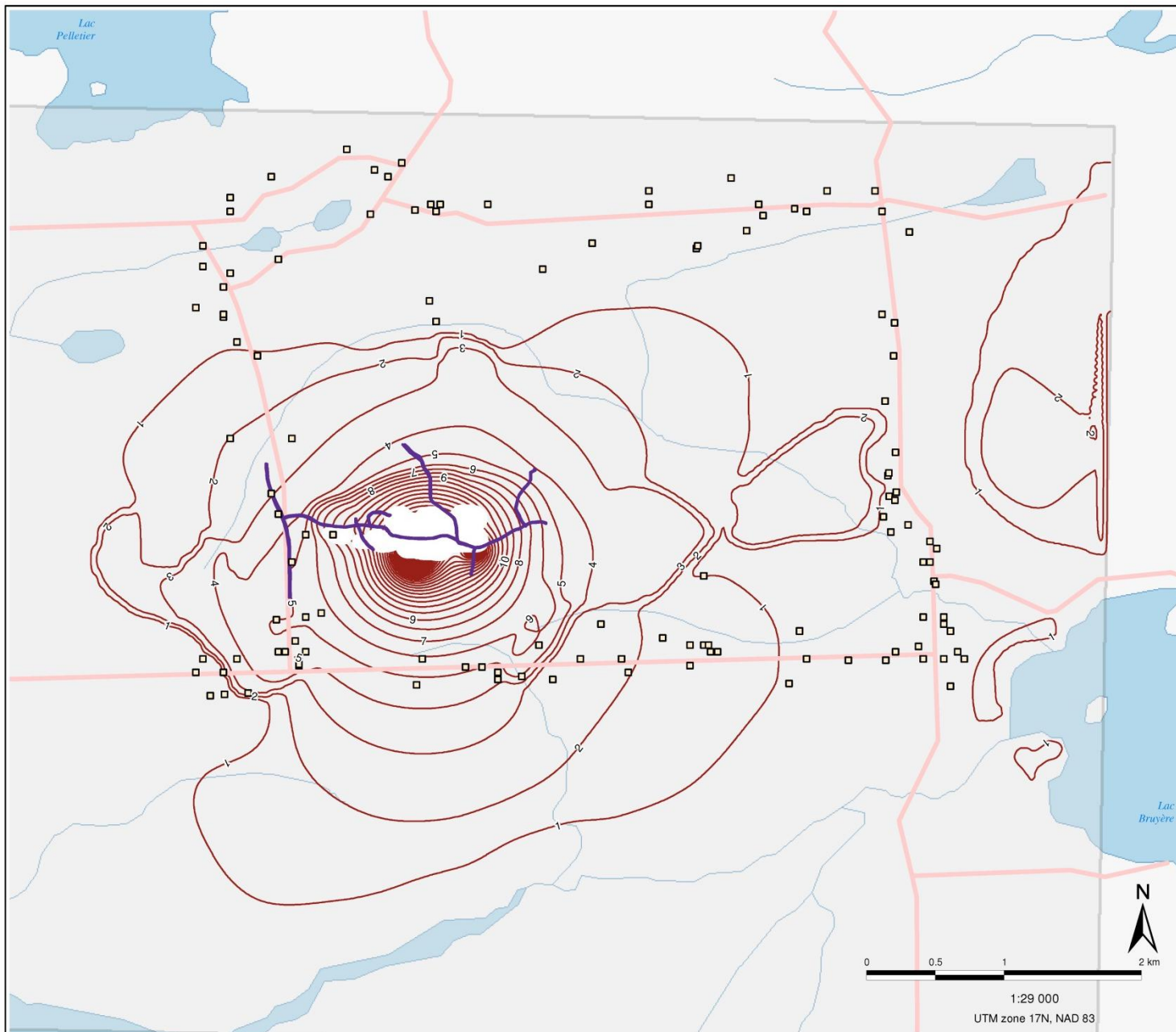
Niveaux piézométriques (élévation en m)

- Moins de 275 m
- 275 - 280 m
- 280 - 285 m
- 285 - 290 m
- 290 - 295 m
- 295 - 300 m
- 300 - 305 m
- 305 - 310 m
- 310 - 315 m
- 315 - 320 m



Étude hydrogéologique
- Projet minier Granada

Élévation de la nappe d'eau souterraine dans l'aquifère rocheux



Éléments anthropiques

- Infrastructure environnante
- Courbe de rabattement
- Route site minier
- Route
- ▭ Zone d'étude

Éléments physiques

- Cours d'eau
- Étendue d'eau



Étude hydrogéologique -
Projet minier Granada

**Surface de rabattement des
niveaux d'eau souterraine
(pompage en régime permanent)**

MAIN TOPICS OF INTEREST

TRAFFIC

Possible source of impact:

- 👑 Trucks on roads in the village

Concerns about:

- 👑 Safety
- 👑 Noise

Examples of measures to be discussed:

- 👑 Restrictions for vehicles on certain road segments
- 👑 Use of alternate routes
- 👑 Trucks circulating in the evening and at night

MAIN TOPICS OF INTEREST

NOISE AND VIBRATIONS

Possible sources of impact:



Drilling, blasting, equipment

Concerns about:



Impact of vibrations



Noise pollution

MAIN TOPICS OF INTEREST

LAND USE

Possible sources of impact:



Resumption of mining activities in a historical area that today is shared by various land users

Concerns about:



Impacts on recreational activities



Harmonious cohabitation with residents living near the project

Lac Pelletier

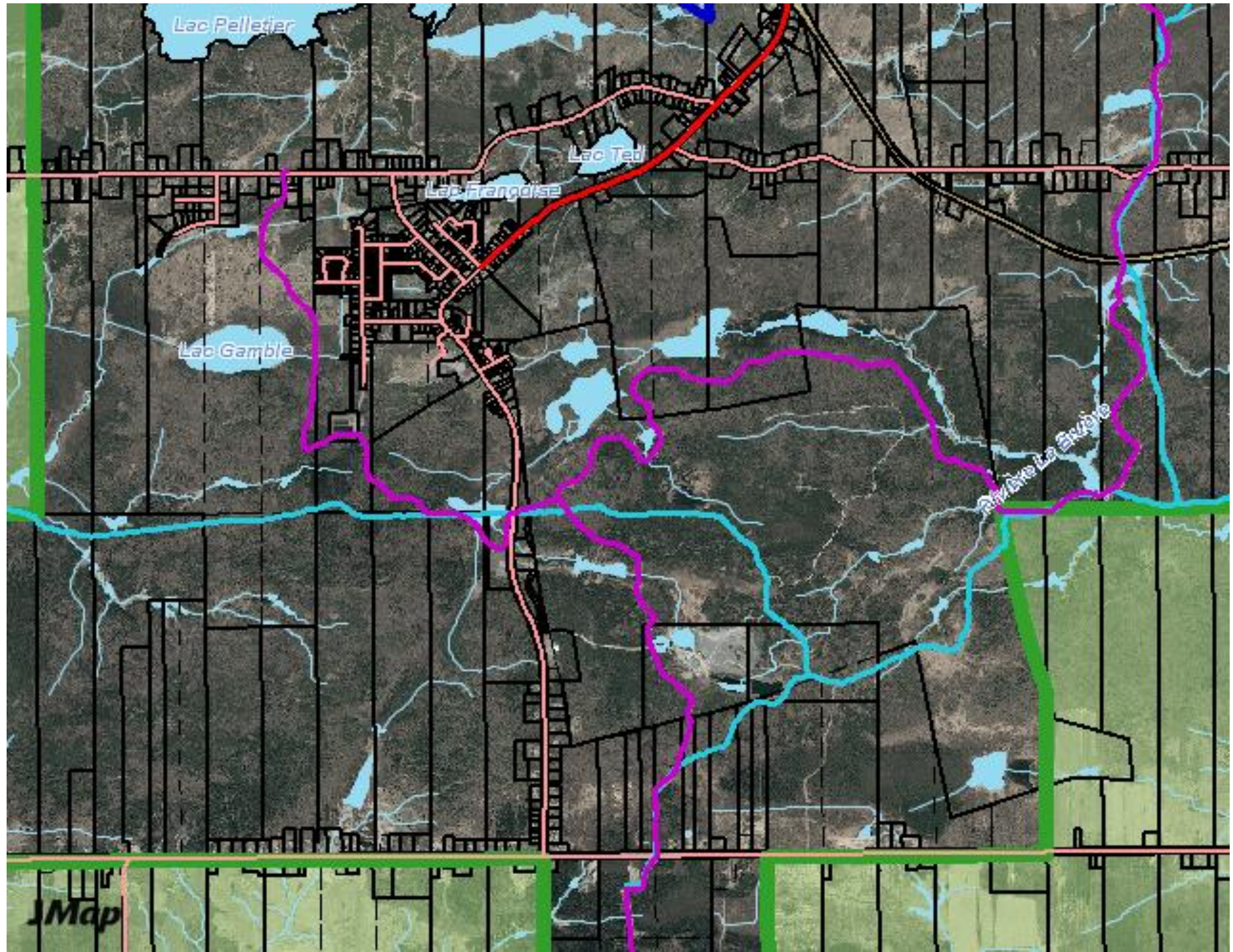
Lac Tad

Lac Francoise

Lac Gamble

Rivière La Savoye

JMap



BEST PRACTICES IMPLEMENTED BY GOLD BULLION



Clean-up of the former Granada mine site



Reprocessing of waste rock in civil works



Preservation of a duck habitat



Improved forest management



Artistic design built with waste rock left on site (*Rock art*)

REPROCESSING OF WASTE ROCK








GOLD BULLION
DEVELOPMENT CORP

2014 MILESTONES

- 👑 Technical inventory of wells in the area
- 👑 Complete environmental study
- 👑 Finalize pre-feasibility study (PFS)
- 👑 Certificate of Authorization for “rolling start”
- 👑 Detailed drilling program
- 👑 Start-up of production in the pit at 500 t/day

GOLD BULLION IS LISTENING

-  Reduce the negative impacts of the program and try to prevent them whenever possible
-  Answer diligently to comments and questions from the community and apply corrective measures if needed
-  Establish a healthy, transparent and constructive dialogue with stakeholders



GOLD BULLION
DEVELOPMENT CORP

WE ARE LISTENING

Gold Bullion Development Corp.

1155, René-Lévesque West, suite 1005

Montréal (Québec) H3B 2J2

Telephone: 514 397-4000

Email: granada@goldbulliondevelopmentcorp.com

www.goldbulliondevelopmentcorp.com



GOLD BULLION
DEVELOPMENT CORP

QUESTIONS ?